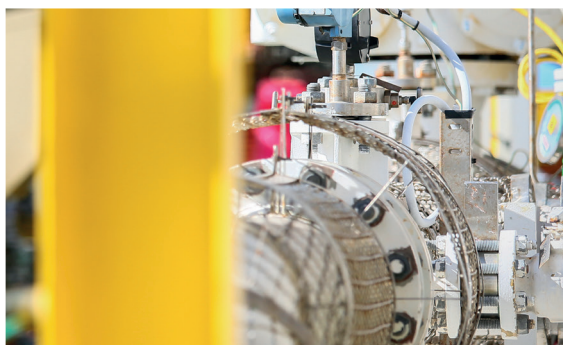
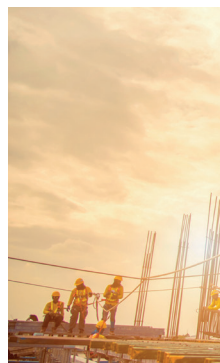


IChemE Major Hazards Management Agenda



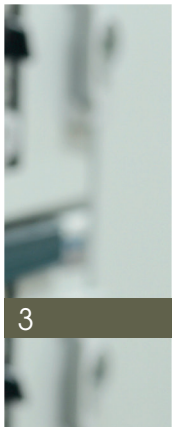
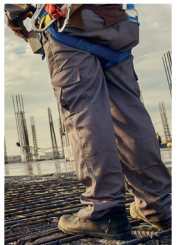
Contents

Purpose	3
Vision	4
Aims	5
Tactics	8
Measuring success	9
Stakeholders and partners	10

Purpose

To advance the understanding and application of managing major hazards worldwide for the benefit of society.

The Major Hazards Committee (MHC) is the volunteer body that leads major hazards strategy within IChemE. The MHC provides an environment where the agendas of the different IChemE major hazards groups involved can be communicated, coordinated, and aligned to an overarching IChemE major hazards agenda. The MHC will develop and set the strategies that will result in promotion of good practice and continual improvement in major hazards management across industry. Major hazards includes the elements of process safety. (Major Hazards Committee Terms of Reference).



Vision

IChemE is a peer group leader for major hazards management, sharing our knowledge in this area and learning from others.



Aims

	Respected for continuing professionalism and technical competence in managing major hazards in a holistic way using systems and life cycle approach.	Recognised as a vibrant learned society and thought leader that materially impacts the management of major hazards.	Acknowledged as a peer group leader in which an engaged membership receives and adds value.	Known as a high performing organisation delivering significant value and proactively learning from others.
	IChemE is recognised for setting and upholding professional standards in major hazards management, supporting industry, employers, and employees with skill development.	IChemE is recognised as a leader in developing insight and opinion and providing technical leadership in major hazards management across diverse industry sectors.	IChemE will strive to improve societal understanding of risk. We will support members across their career lifecycle.	IChemE will embrace digitalisation and continue to develop organisational capability, through implementation of a coherent business architecture, which is financially sustainable.
Influence and recognition	IChemE is recognised in the engineering profession and beyond for its contribution to the improvement major hazards management. We are the institution of choice for and development of skills and process safety qualifications.	IChemE is a key global thought leader and influencer in major hazards management, leading the development and sharing of insights. We develop and share solutions and products for identified and emerging major hazards problems.	IChemE leads thinking to recognise that major hazards management extends beyond chemical engineers. We are a peer group leader within the professional engineering institutions, sharing with and learning from others. We recognise the complimentary work of different subgroups within IChemE. Our reach impacts multiple geographies and jurisdictions.	

Education and professional development	<p>IChemE supports improved safety outcomes in industry through a focus on developing improved educational resources* for the next generation of engineers, both at school and university. We work to embed major hazards management in all Chemical Engineering undergraduate programmes.</p> <p>IChemE requires members to undertake continuing professional development and provides support to assist with this, including the pathway to Professional Process Safety Engineer registration.</p> <p>*Resources include materials and in-kind support.</p>			
Standards, tools, and good practice	<p>IChemE will lead the way in helping industry make good practice become common practice.</p>	<p>IChemE will maintain a knowledge hub of resources and position statements.</p> <p>IChemE will share lessons learnt by the process industries across different engineering professions and different industries.</p>		<p>IChemE will develop processes to share lessons learned across different industries. We will drive to have an international standard for major hazards management to be adopted, to improve the application in industry. We will seek feedback on performance and develop improvement plans, applying systems thinking to all our work.</p>

Embedded within industry	Major hazards management is the way of working, with companies embedding it from shop floor to executives, with all groups understanding how to address issues. An international standard is embedded and reporting of metrics is undertaken across industry.			
Connectivity, joined up thinking	IChemE will seek to understand where it can effectively contribute to the improvement of major hazards management.	IChemE will promote the sharing of learnings and resources across industries.	IChemE will seek to leverage off its membership to find the best major hazards management solutions.	IChemE will develop and maintain collaborative relationships both internally and externally, to drive alignment on common goals and priorities. We will leverage synergies across the institution to address gaps and understand overlaps. We will ensure there is clear communication among all relevant groups, to encourage participation.

Tactics

Area	Actions
Building relationships	<ul style="list-style-type: none"> ■ actively work to cooperate in activities ■ develop engagement methods with the various membership groups ■ collaborate and communicate to ensure each constituent group remains connected
Avoiding duplication	<ul style="list-style-type: none"> ■ establish who does what and when ■ establish a shared understanding of the strengths and differentiation of each constituent group ■ avoid duplication of work done by other organisations, instead look for collaborative opportunities
Clear communication	<ul style="list-style-type: none"> ■ coordination of messaging and clarity on who communicates and when ■ communicate a clear vision to the broader membership
Understanding cultural differences	<ul style="list-style-type: none"> ■ focus on teaching rather than preaching ■ develop culturally sensitive materials where possible ■ recognise and understand the cultural differences where the MHC has influence ■ recognise and understand the legislative difference where the MHC has influence ■ build networks of like-minded groups in different countries
Avoiding conflicts	<ul style="list-style-type: none"> ■ all potential conflicts need to be declared and understood and managed
Resourcing	<ul style="list-style-type: none"> ■ understand the resources available to deliver outcomes <ul style="list-style-type: none"> – human and financial – major hazard management resources for education
Influencing industry	<ul style="list-style-type: none"> ■ encourage and facilitate the sharing of lessons ■ encourage adoption of major hazard management resources ■ encourage education across industry
Quality of message	<ul style="list-style-type: none"> ■ ensure a mechanism for quality control is in place on released materials

Measuring success

The success of the major hazards management agenda will be measured in a number of ways. These include our growth in outreach across academia, institutions, diverse industries, and jurisdictions worldwide. Success will also be measured by the strength of our collaborative relationships, the quality of the resources developed and the manner in which we work together for the purpose of advancing major hazards management for the benefit of society. Where constituent members of the MHC may not agree, they will work through a constructive process, respecting the opinions of others to reach a conclusion. This need not be agreement or consensus because dissent may be a valid outcome. At all times, the MHC member shall abide by IChemE's code of professional conduct (www.icheme.org/codeofconduct).

The ultimate success of enhanced major hazards management will be a reduction in process safety risk. While the IChemE cannot directly impact this measure, it can strive to influence industry to achieve this by working to this agenda document.



Stakeholders and partners

There are several stakeholders and partners to be considered. These are described in the stakeholder mapping document.

If you are interested in more information, please contact us via email safetycentre@icheme.org



10



Contact us for further information

UK

t: +44 (0)1788 578214

e: membersupport@icheme.org

Australia

t: +61 (0)3 9642 4494

e: austmembers@icheme.org

Malaysia

t: +603 2283 1381

e: malaysianmembers@icheme.org

New Zealand

t: +64 (0)4 473 4398

e: nzmembers@icheme.org

Singapore

e: singaporemembers@icheme.org



www.icheme.org

Incorporated by Royal Charter 1957. The Institution of Chemical Engineers (trading as IChemE) is a registered charity in England and Wales (214379) and Scotland (SC039661). The Institution also has associated entities in Australia, Malaysia, New Zealand and Singapore.