

# About IChemE

---

“ IChemE is an organisation with a rich history and a bold mission. ”



Mark Sutton  
IChemE Trustee

---

---

## introduction

---

The Institution of Chemical Engineers (IChemE) is an internationally recognised professional body committed to advancing the contribution of chemical engineering for the benefit of society.

In support of this core purpose, we promote a wide awareness of the role of chemical engineering. We develop, maintain, and administer standards of professionalism, education, safety, and engineering practice. We work to attract a broad range of talent from diverse backgrounds into the discipline, and we inspire young professionals to develop their competence to ensure that society is protected.

We assess applicants for membership and professional registration through a rigorous peer review process thereby promoting professional development and competence in all those who enter the profession.

By promoting high standards, we encourage chemical engineers to deliver economic benefit and wellbeing without causing harm to society or the planet.

Through the knowledge and expertise of our members we inform policy development and advance the practice of chemical engineering. We recognise and celebrate excellence; we undertake informed advocacy on behalf of chemical engineering and chemical engineers; and share the message that chemical engineering matters.

## Governance

---

### What is governance?

There is no conclusive definition of 'governance', but it refers, in essence, to the way an organisation is set up to ensure its overall direction, effectiveness, supervision, and accountability. Our governance system and relationships are shown, in broad summary, in the diagram on page 16.

Fundamentally, the Institution exists to **benefit the global community by advancing the art, science, application,**

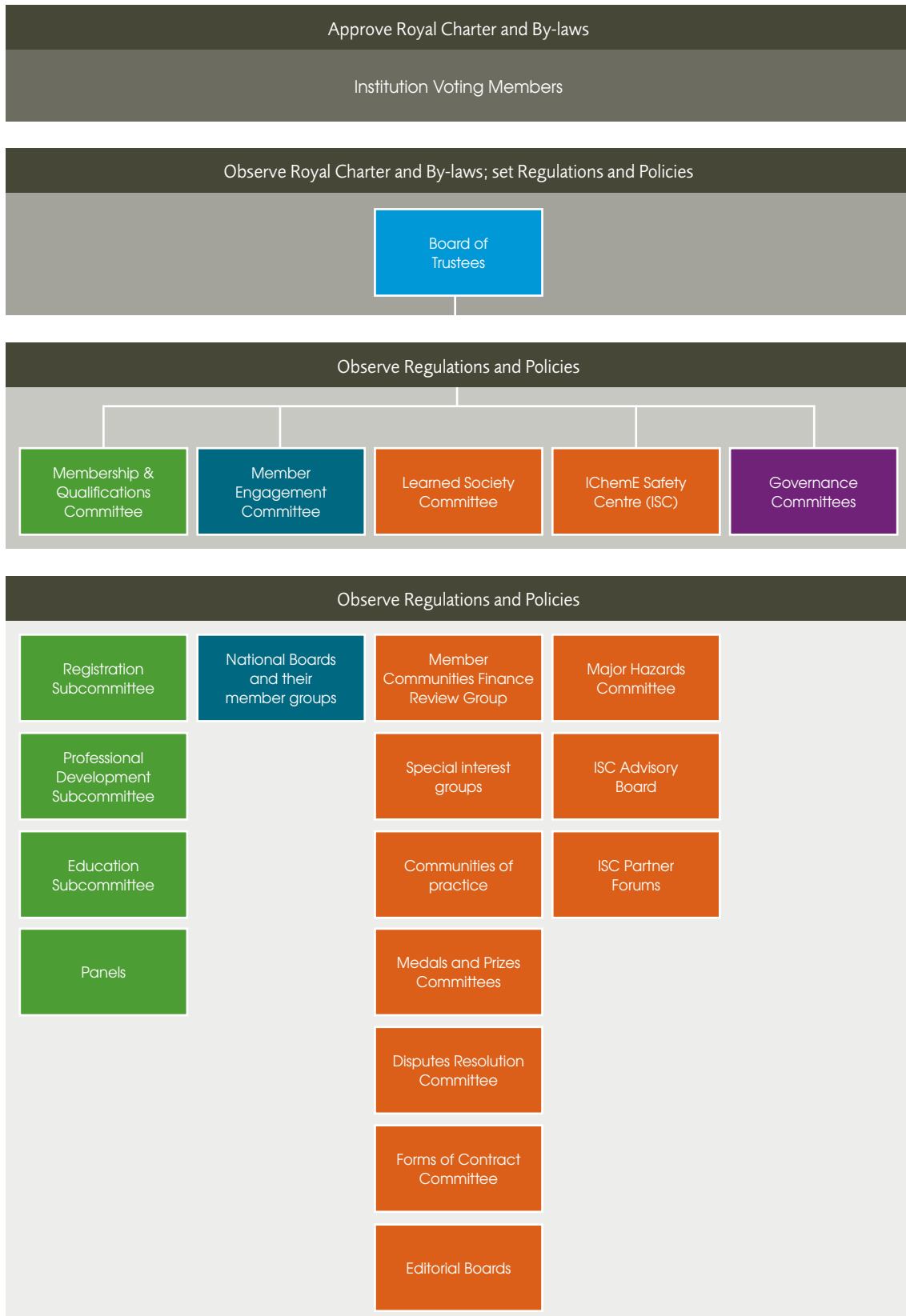
**and professional practice of sustainable chemical engineering in all its branches.** This aim, known as our Objects, is stated in our Royal Charter and everything the Institution does should contribute in some way to achieving this aim.

Our Royal Charter and the documents that flow from it, particularly our By-laws and Regulations, set out the principles by which we are governed. At the highest level these principles are:

- ultimately, the Voting Members are both the Institution itself and its custodians; only they can approve the By-laws and elect the Trustees, for example, and they must be kept informed about the Institution's progress;
- the Voting Members elect the Trustees who work as the Board of Trustees. The Board is accountable to the Voting Members for the Institution's strategy in pursuit of its Objects and for managing the Institution well. It also exercises the Institution's powers on its behalf; these are set out in the Royal Charter;
- given its size and complexity, the Board of Trustees cannot directly manage the Institution. Our By-laws therefore allow the Board to delegate its powers, with some limitations, and to appoint a Chief Executive and staff. The Board delegates powers to various member groups within our committee structure and to the Chief Executive; each of these further delegates certain powers, again to be effective;
- the volunteers, the Chief Executive, and staff work in close partnership to implement the strategy and manage the activities through which we pursue our Objects, using their delegated powers, and reporting as required.

Many of our volunteers will work in a capacity that fits into the committee structure but whatever their role, all volunteers in some way contribute to achieving the Institution's Objects.

## Governance structure



The views of the Institution's membership are fed into the governance system, the Board in particular, as a way of keeping those involved in governance in touch; this happens primarily through Congress and events such as Town Hall meetings. Important as Congress and these events are, they have an advisory rather than a governance function, so they are not shown on the diagram above.

---

## IChemE as a charity

As a registered charity, IChemE is regulated by the Charity Commission for England and Wales (No 214379) and Scotland (No SC039661). Charities are organisations set up for public benefit and this reflects the objectives of IChemE. Our Trustees are responsible for the overall administration of the charity in line with the requirements of the Charity Commission, although the day-to-day management is carried out by the staff team. Further information about the operation of charities can be found on the Commission's [website](#).

## Royal Charter and By-laws

IChemE was awarded a Royal Charter in 1957. A Royal Charter is an instrument of incorporation, granted by the Sovereign, which confers independent legal personality on an organisation and defines its objectives, constitution, and powers to govern its own affairs.

**IChemE's Royal Charter and By-laws** are the governing documents that define the Institution's purpose, powers, and duties.

For more information on the governance of IChemE see [www.icheme.org/governance](http://www.icheme.org/governance)

## Annual report and accounts

IChemE submits its Annual Review and Accounts to the Annual General Meeting each year. The Annual Review provides an overview of the Institution's activities over the year and showcases the impact we have made. Highlights include; supporting members with professional qualifications, delivering engaging events, and submitting specialist policy recommendations. The review also provides a summary of the financial results. The latest report can be found at [www.icheme.org/annual-review](http://www.icheme.org/annual-review)

---

## Our people

### Trustees

Our Board of Trustees are responsible for the strategic direction of IChemE. All top-level decisions are approved by the Board. In addition, IChemE's annual budget and financial decisions are scrutinised and signed off by the Trustees. Trustees have a joint responsibility to work together and drive the Institution forward.

Meet our Trustees: [www.icheme.org/trustees](http://www.icheme.org/trustees)

### Presidential Team

Our Presidential Team comprises of the current, past and deputy president, all of whom are Fellows of the Institution. The role of the President is to lead the board of Trustees and ensure our strategy and policy reflect our aims.

You can read more about our Presidents (both past and present) at [www.icheme.org/presidents](http://www.icheme.org/presidents)

### Congress

Congress is the member advisory body of the Institution comprising up to 40 volunteer members elected by their peers. It acts as a sounding board and advises the Board of Trustees on matters of interest to IChemE and its members. This includes reviewing and advising on changes to the governance and operation of IChemE, as well as providing the members' views on strategic initiatives. Congress consists of two electoral colleges; one that elects on a geographical basis (Regional College) and one that reflects the spectrum of membership grades (Functional College).

Our current Congress members are listed at [www.icheme.org/congress](http://www.icheme.org/congress)

### Executive Team

The Executive Team, led by the Chief Executive Officer, is responsible for the day-to-day management of the Institution.

You can meet our Executive team at [www.icheme.org/executive-team](http://www.icheme.org/executive-team)

### Volunteers

We have over 3,000 volunteers across the Institution in a variety of roles. We are fully committed to volunteering being a positive and enriching experience for all who those who chose to get involved. Volunteering is a worthwhile opportunity that is open to everyone, and every member has something to offer. Our volunteers make a significant contribution to the work we do.

## Contact us for further information

UK

☎ +44 (0)1788 578214

✉ [membersupport@icheme.org](mailto:membersupport@icheme.org)

Australia

☎ +61 (0)3 9642 4494

✉ [austmembers@icheme.org](mailto:austmembers@icheme.org)

Malaysia

✉ [malaysianmembers@icheme.org](mailto:malaysianmembers@icheme.org)

New Zealand

☎ +64 (0)4 473 4398

✉ [nzmembers@icheme.org](mailto:nzmembers@icheme.org)



[www.icheme.org](http://www.icheme.org)

Incorporated by Royal Charter 1957. The Institution of Chemical Engineers (trading as IChemE) is a registered charity in England and Wales (214379) and Scotland (SC039661). The Institution also has associated entities in Australia, Malaysia and New Zealand.