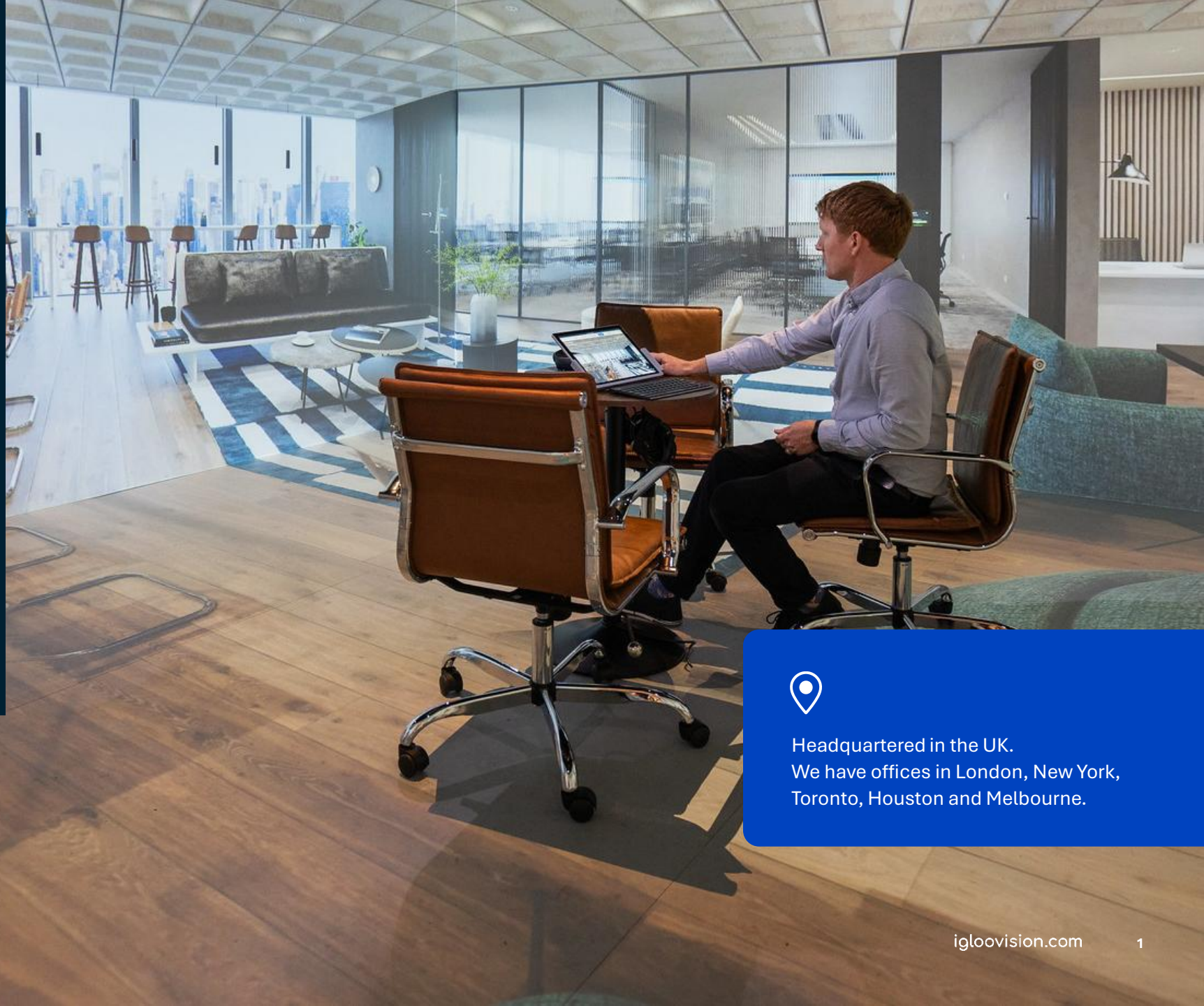


Igloo is the shared immersive space company

In an Igloo immersive space, you can engage with any digital content including –

- 3D visualisation tools
- Design tools
- 3D models
- Digital twins
- 360° imagery and video
- Static 2D content
- Digital dashboards
- VR/AR/XR content and more

We provide all the enterprise-grade technology needed to operate these spaces – which are powered by our own flexible, easy-to-use, layer-based software platform, Igloo Core Engine.



Headquartered in the UK.
We have offices in London, New York,
Toronto, Houston and Melbourne.



Igloo immersive environments for...

- Improved project engineering
- Remote operations support
- Improved efficiencies
- Enhanced collaboration
- Mitigated risks
- Engaged stakeholders
- Onboarded and trained staff



A growing roster of AECO clients worldwide

We work with clients across the AECO sector, from asset owners to innovation leaders and consultants to contractors and more – typically helping them to optimise and de-risk the development, delivery, operation and decommissioning of large infrastructure assets.

Turner



AtkinsRéalis



**BURNS
MEDONNELL**



nbbj



ExxonMobil

AECOM

Microsoft



accenture



SKANSKA

THIESS



Tennet



نيوم NEOM



Deloitte.



VolkerWessels UK

sh p

What problems are we solving?



Disconnected data visualisation

Most industry projects lack the digitally enabled spaces needed to sufficiently visualise siloed data sets on a large scale. Immersive spaces enable you to surround yourself with it and make project-wide data accessible in one place.



Expensive and dangerous site visits

The cost and risk of physical site visits can be high. Project teams can use immersive spaces to give safe and affordable access to hazardous sites, allowing project teams to perform the same checks in a realistic environment.



Misaligned stakeholder perspectives

Project stakeholders often struggle to share a common understanding of complex designs and data. Immersive environments allow teams to “stand inside” their data, ensuring everyone has a consistent, accurate view of the project.



Clients use our spaces for four main use cases

Visualise

Step inside project assets and tools including 3D CAD, digital twin tools, lidar scans, GIS and all your standard 2D data to interrogate datasets.

- Collaborative design reviews
- Clash detection
- Supplier briefings
- Offline rehearsals
- Project handovers
- Sub-surface visualisations

Simulate

Experience scenarios that are too expensive or hazardous to create in real life.

- Induction training
- Operator training
- HSE training
- Site familiarisation
- Virtual site visits
- Asset integrity reviews

Collaborate

Make meetings more productive by providing room-scale, team-wide access to any project data, dashboards and digital tools.

- Planning meetings
- Progress meetings
- Review meetings
- Stage-gate reviews

Engage

Immerse stakeholders in captivating, compelling and convincing narratives, showcases, and brand content.

- Credentials presentations
- Sales presentations
- Stakeholder engagement
- Community engagement

“

I don't know how we could have got so many people through these training sessions without an Igloo immersive space.”

Mike Dunlop, Principle Immersive Media Producer, AtkinsRéalis

Clients use Igloo spaces across the entire asset lifecycle

Across every stage of the asset lifecycle, Igloo spaces can create new value.



Significant, measurable benefits from trusted clients

A major energy company in Saudi Arabia



Use case: Technology adoption & integration

Benefits: risk free, repeatable sand box environment

Content: Kairos 3D, Honeywell IFS

A global energy corporation with HQ in America



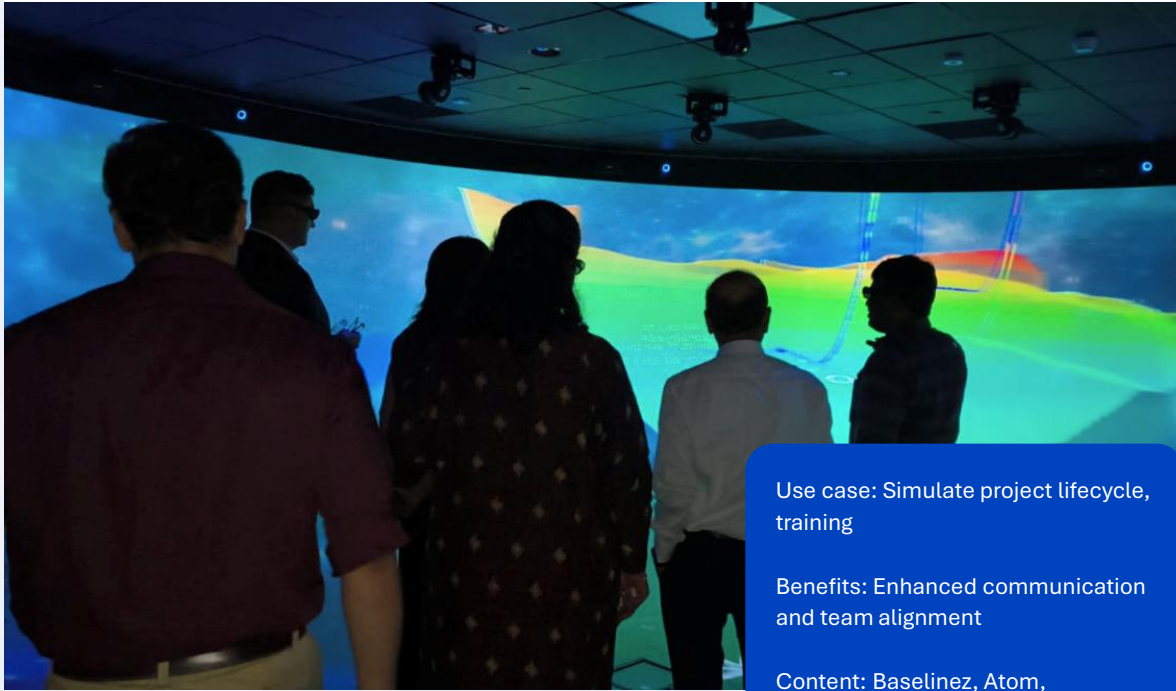
Use case: Simulation and Training

Benefits: mitigate risk, reduce cost, increase efficiencies

Content: Sub surface visualisation, heavy plant operator training

Significant, measurable benefits from trusted clients

A multinational conglomerate based in India

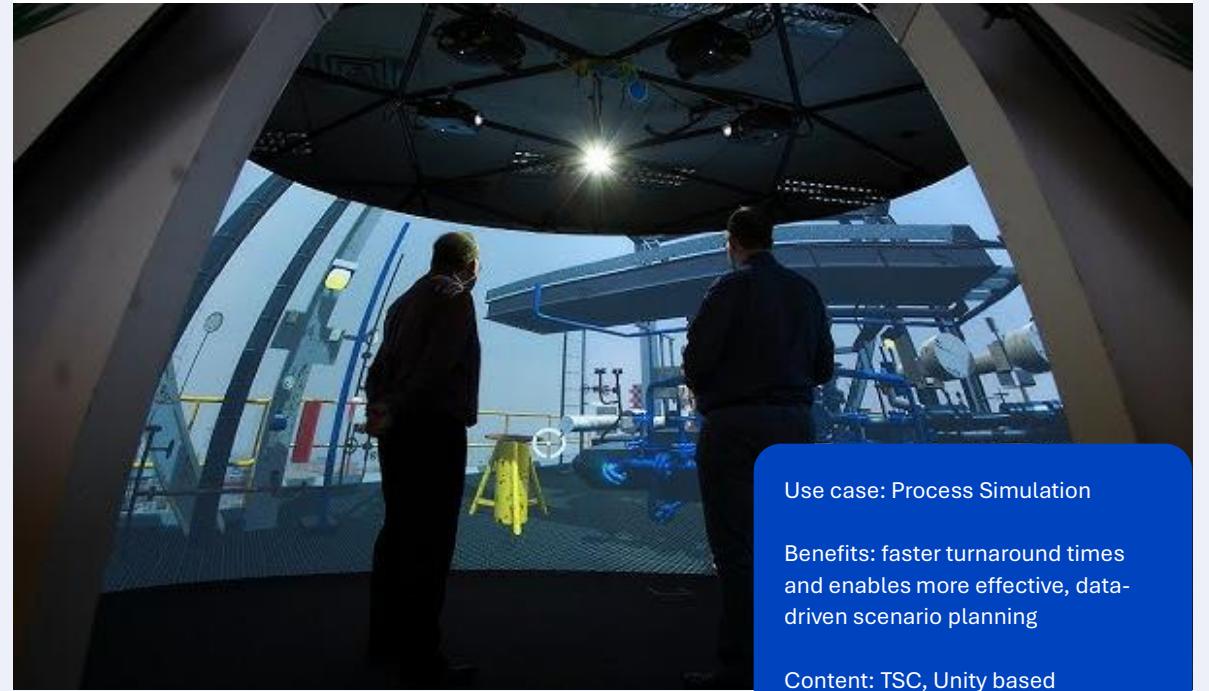


Use case: Simulate project lifecycle, training

Benefits: Enhanced communication and team alignment

Content: Baselinez, Atom, Haliburton Landmark DSXR etc

A major British oil and gas company



Use case: Process Simulation

Benefits: faster turnaround times and enables more effective, data-driven scenario planning

Content: TSC, Unity based application linked to control room

What is Igloo Core Engine?

Igloo Core Engine is the operating platform for immersive spaces.

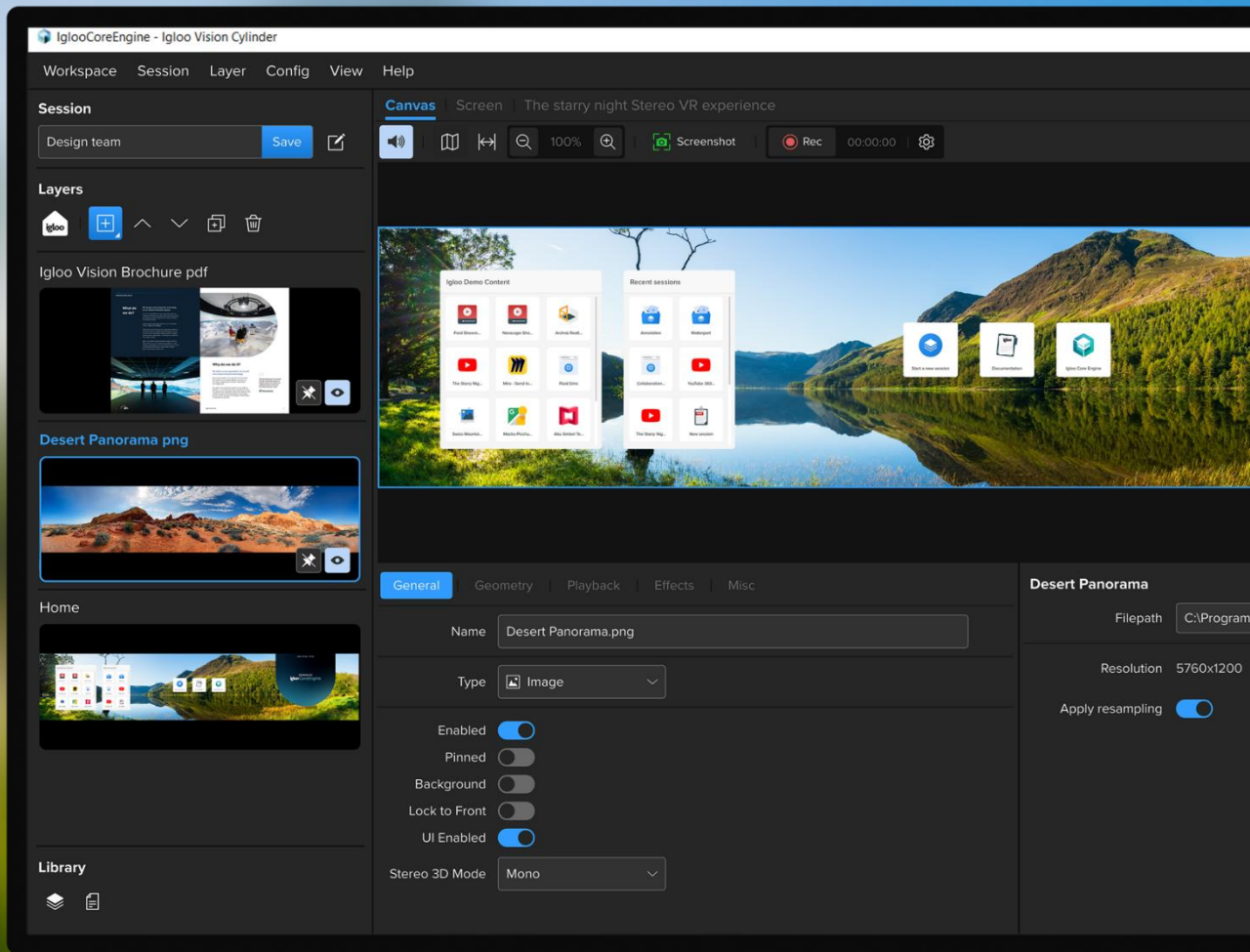
It can power any shared immersive space, irrespective of size, shape, configuration, or display technology.

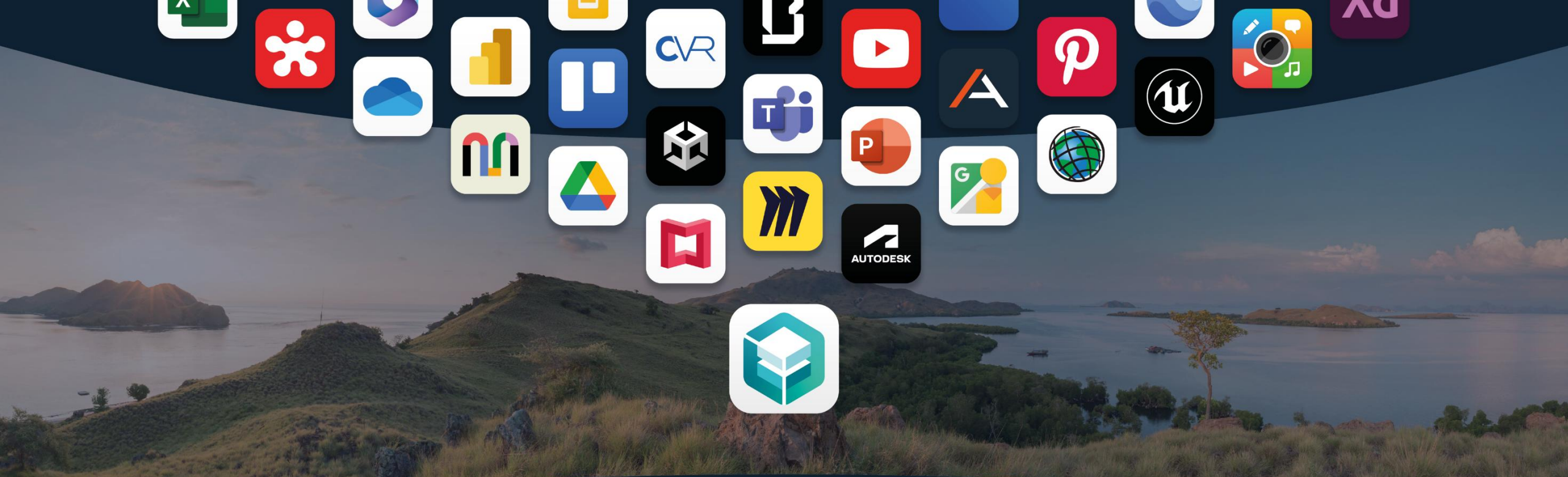
This industry-leading and award-winning software enables you to load, interact, and manipulate lots of different content types, opening up a world of use cases for your immersive space.

“

Igloo Core Engine has made the whole process of interacting with the space much more seamless and much more accessible.”

Aaron Saxton, University Academy 92





Enabling you to use the tools you already use

Igloo Core Engine integrates with a number of industry-leading applications and has more integrations than any other immersive provider, making it easy to use your existing tools in an immersive environment.

It has been designed to be content-agnostic, meaning that it works with almost any type of immersive and non-immersive content, as well as virtually any web-based content. So, you can view external project content, designs, data sets, BIM, CAD, virtual site tours and much, much more in your immersive space.



Ready to learn more?

Our team of Igloo experts are just at the other end of an email or phone call to answer your questions about what shared immersive spaces can do for you.

From bases in the UK, USA, Canada and Australia, we work with clients worldwide.

To find out more visit us at www.igloovision.com our website has detailed information about our products, software and experience. Use our case studies page for more inspiration on getting the most from an Igloo.

Email us at info@igloovision.com or call us on +44 (0) 1588 673 337

Sign up to the Igloo newsletter

